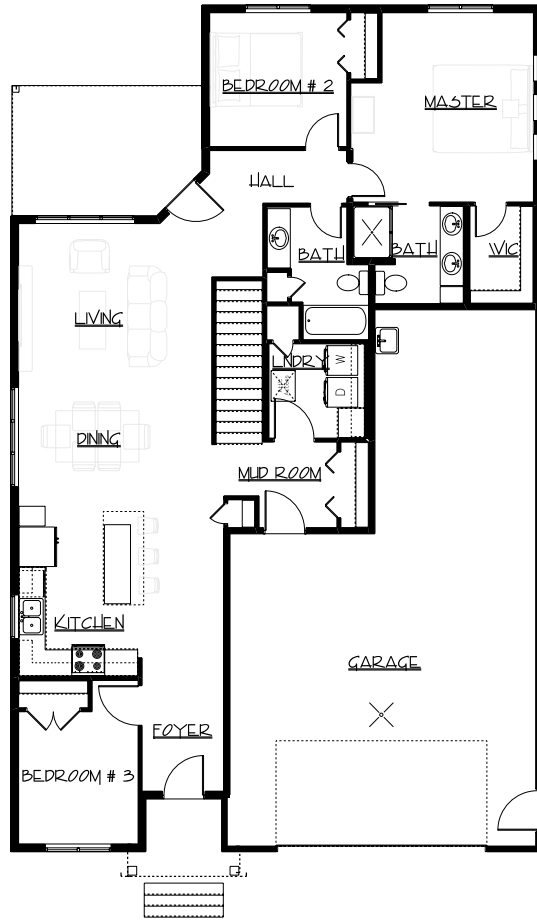


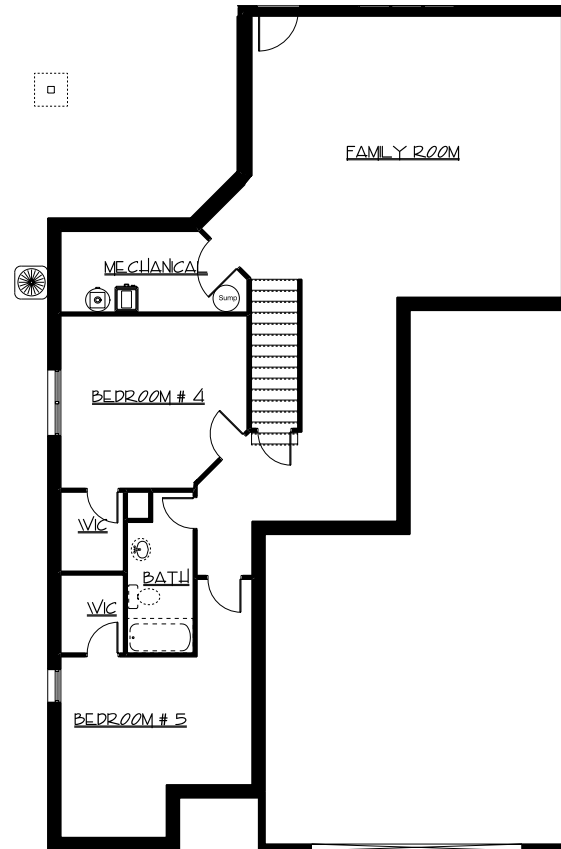


ASPEN

**3 BEDROOMS
2 BATHROOMS
3 STALL GARAGE**



MAIN LEVEL
1,522 SQ FT



BASEMENT
1,522 SQ FT

This 1522sf energy efficient home has 3 beds and 2 baths with a 3 stall tandem garage. Natural light floods in with vaulted ceilings in the kitchen, living room and dining room. There is no running up and down stairs with baskets of clothes in this home, with the laundry room on the main level. Plus, there is plenty of room for growth in the optional basement with space for 2 bedrooms, a bathroom, and a family room.

FAVORITE FEATURES

- Laundry on Main Level
- Vaulted Ceilings
- Quartz Countertops in Kitchen and Laundry Room
- LP SmartSide Siding
- Bertch Cabinets
- Landscaping Package Included

PARAMOUNTBUILDERSINC.NET

