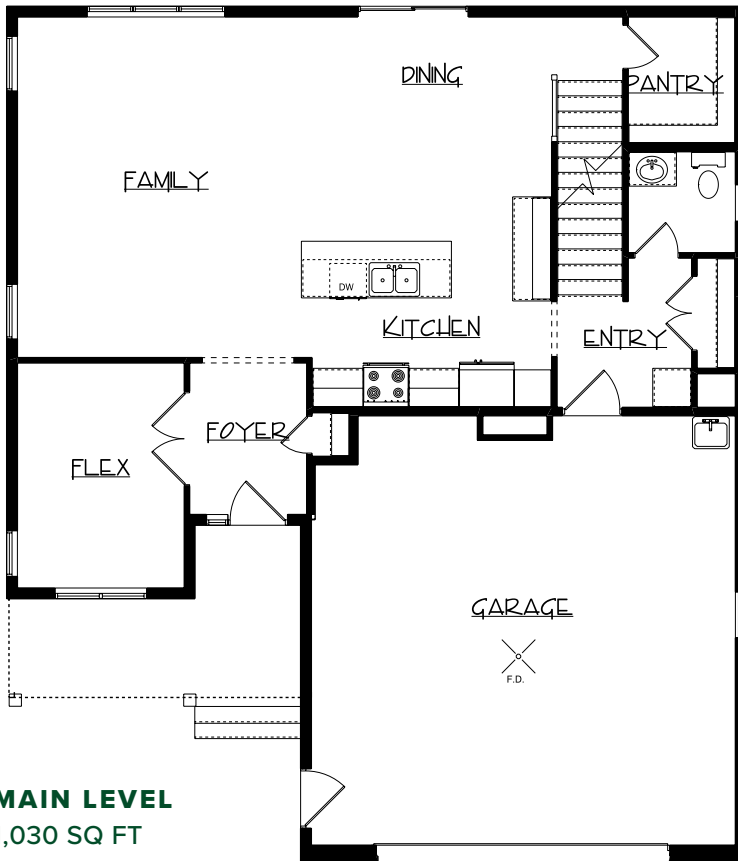


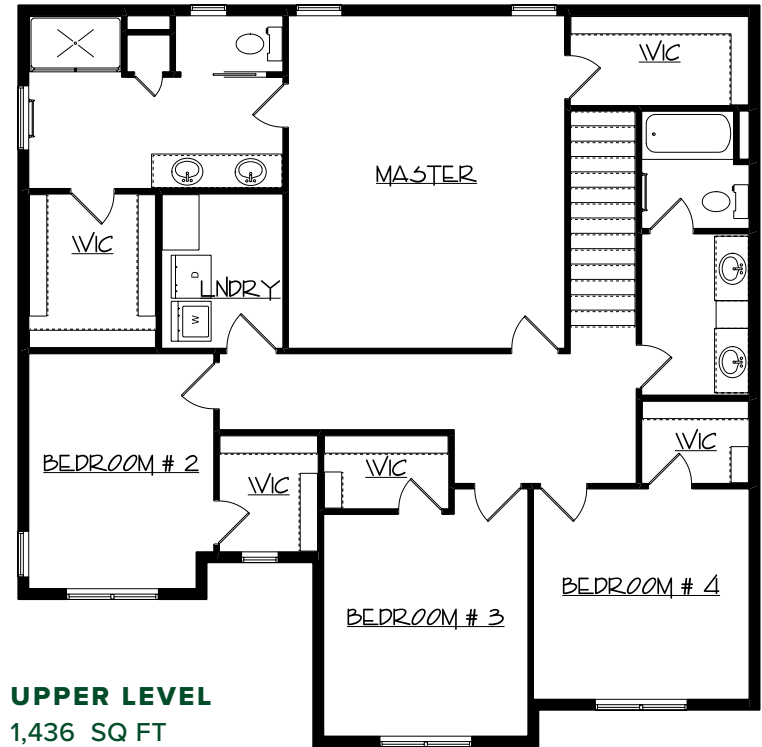


DRIFTON

4 BEDROOMS
2.5 BATHROOMS
3 CAR GARAGE



This spacious 4 bed and 2.5 bath home will have everything you need and more. The 2 large walk-in closets in the master suite and the flex room are some of the features that make this home unique in the market. This home design allows for the option to finish the basement—adding room for an additional bedroom, bathroom, and a family room.



FAVORITE FEATURES

- Walk-in Pantry
- Walk in Closets for All Bedrooms
- Large Mudroom
- Quartz Countertops in Kitchen and Laundry Room
- Stainless Steel Appliance Package

