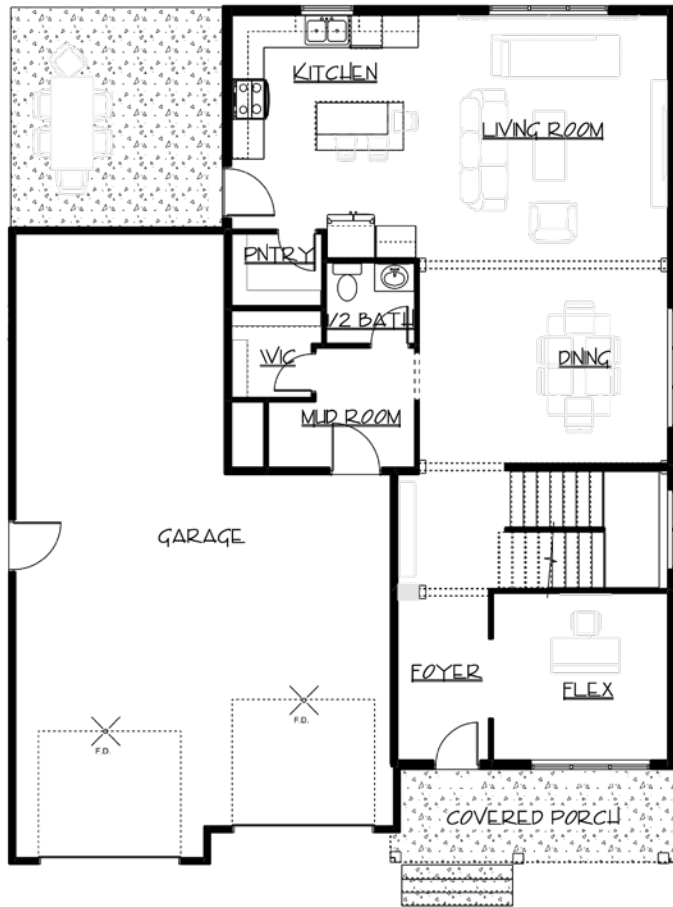


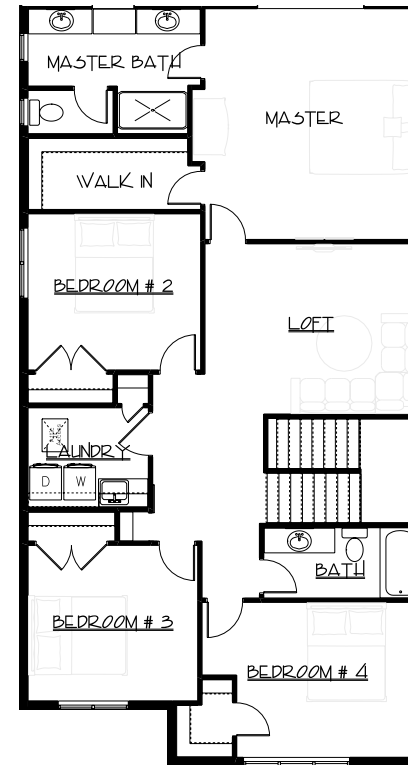


# WILLOW

**4 BEDROOMS  
2.5 BATHROOMS  
3 CAR GARAGE**



**MAIN LEVEL**  
1,174 SQ FT



**UPPER LEVEL**  
1,415 SQ FT

This unique layout offers 4 beds and 2.5 baths, with 2589sf between the main level and 2nd floor, plus a tandem 3 car garage. This home has all the extra amenities; a loft space, flex room, walk-in pantry, mudroom with walk-in closet, and spacious master bedroom. On top of all this space, there is still room for an additional bedroom, bathroom, and family room in the basement if you wish.

**FAVORITE FEATURES**

- Upstairs Loft Space
- Quartz Countertops in Kitchen and Laundry Room
- Tandem 3 Stall Garage
- Bertch Cabinets
- Large Mudroom with Walk-in Closet

